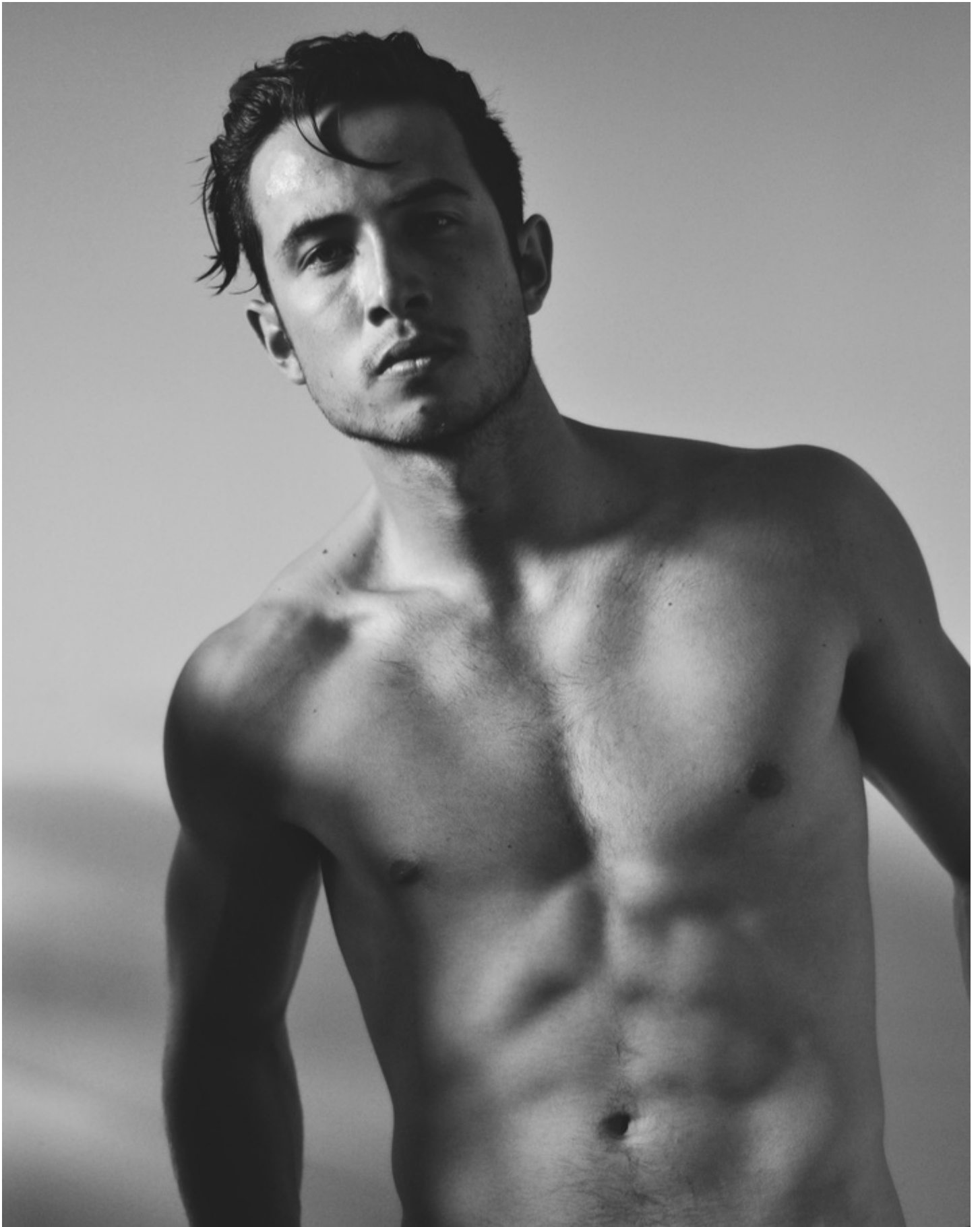




Tony G

Height: 181cm - 5' 11" **Waist:** 79cm - 31" **Inseam:** 81cm - 32" **Suit Size:** 38 **Eye Color:** brown **Hair Color:** black **Shoe Size:** 10.5 **Suit Cut:** regular **Neck:** 37cm - 14.5" **Sleeve:** 87cm - 34.5"



Tony G

Height: 181cm - 5' 11" **Waist:** 79cm - 31" **Inseam:** 81cm - 32" **Suit Size:** 38 **Eye Color:** brown **Hair Color:** black **Shoe Size:** 10.5 **Suit Cut:** regular **Neck:** 37cm - 14.5" **Sleeve:** 87cm - 34.5"

150-220 Cambie Street, Vancouver B.C. V6B 2M9 604-688-0261